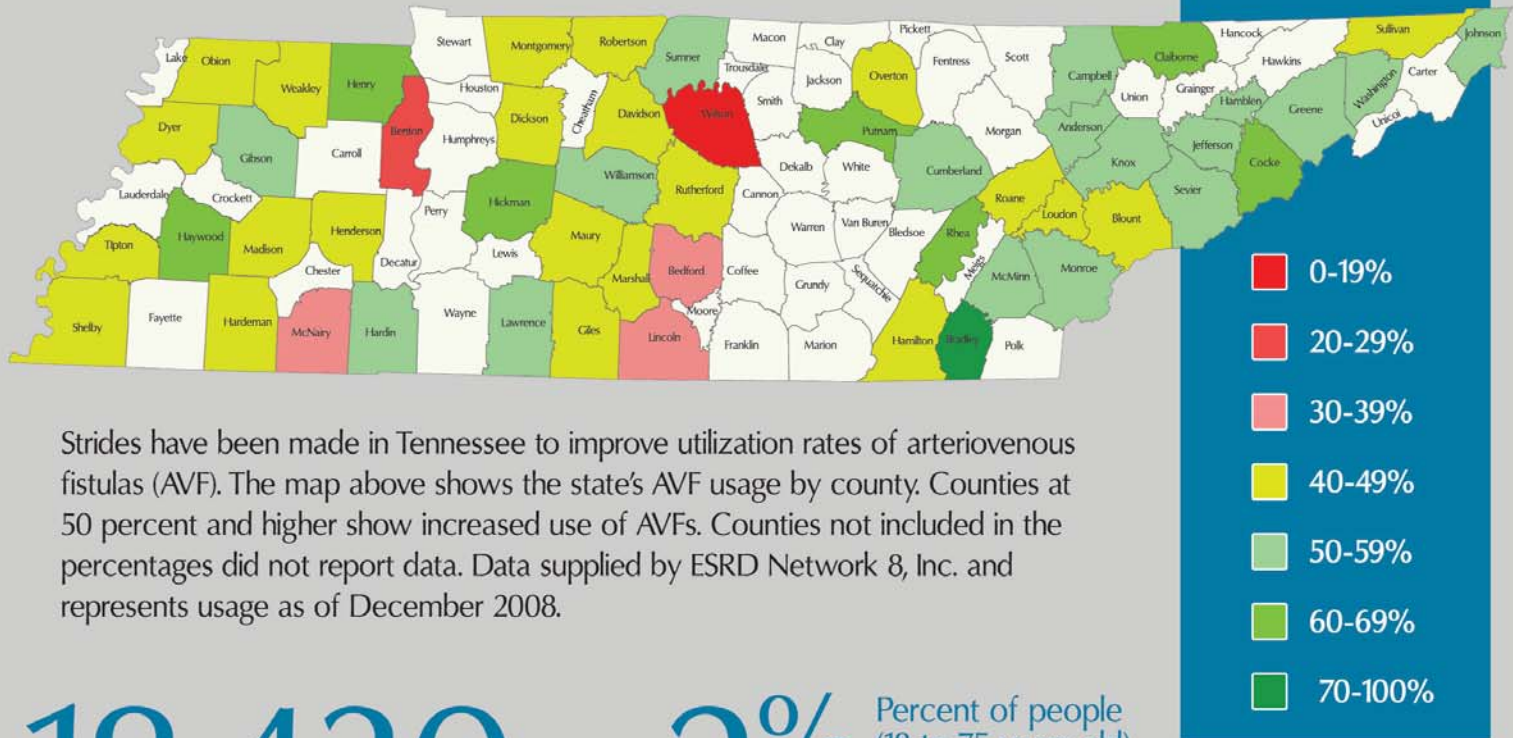


By the Numbers

AVF Usage by County

December 2008



Strides have been made in Tennessee to improve utilization rates of arteriovenous fistulas (AVF). The map above shows the state's AVF usage by county. Counties at 50 percent and higher show increased use of AVFs. Counties not included in the percentages did not report data. Data supplied by ESRD Network 8, Inc. and represents usage as of December 2008.

18,430 = **2%** Percent of people (18 to 75 years old) with Medicare in Tennessee with CKD

Tennessee Medicare population with CKD

Medicare population in Tennessee

CKD Stages

Statewide in Tennessee*

| | |
|---------|--------|
| Stage 1 | 626 |
| Stage 2 | 1,922 |
| Stage 3 | 10,526 |
| Stage 4 | 4,453 |
| Stage 5 | 903 |

* Total number of people (age 18 to 75) with Medicare that have CKD

CKD Stage Prevalence in the Top 10 Counties in Tennessee*

| County | Stage 1 | Stage 2 | Stage 3 | Stage 4 | Stage 5 |
|------------|---------|---------|---------|---------|---------|
| Davidson | 34 | 116 | 680 | 296 | 69 |
| Hamilton | 20 | 112 | 742 | 325 | 64 |
| Knox | 63 | 177 | 562 | 154 | 21 |
| Madison | 19 | 13 | 99 | 59 | 18 |
| Montgomery | 8 | 45 | 176 | 53 | 12 |
| Putnam | 5 | 14 | 138 | 60 | 17 |
| Rutherford | 5 | 26 | 316 | 129 | 22 |
| Shelby | 60 | 165 | 1063 | 420 | 119 |
| Washington | 7 | 16 | 103 | 84 | 16 |
| Williamson | 1 | 21 | 112 | 63 | 3 |

Source: The Centers for Medicare & Medicaid Services (CMS)